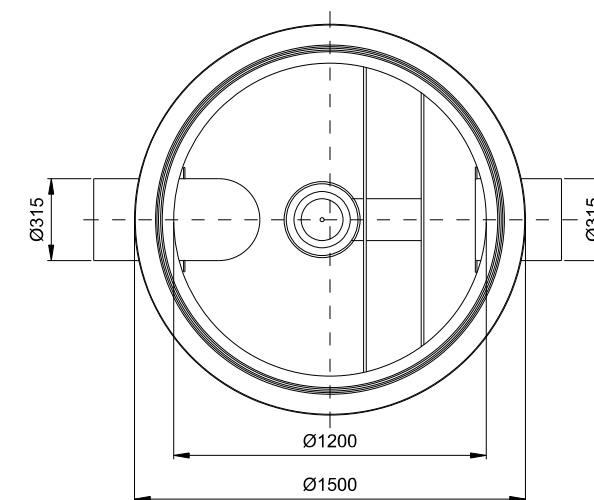


Technical drawing of a vertical container or vessel. The drawing shows a cross-section of the vessel with a central vertical assembly. The vessel has an outer diameter of  $\varnothing 1500$  and an inner diameter of  $\varnothing 1200$ . The total height is 2435. The central assembly has a top section with a diameter of  $\varnothing 625$  and a height of 220. The central assembly has a central vertical pipe with a diameter of 50. The side components have a diameter of  $\varnothing 315$  and a height of 1645. The bottom section has a height of 1695. The drawing includes a section line A-A and a dimension of 150 for the bottom flange thickness.



Schemat separatora zintegrowanego z osadnikiem  
typ SK2BP 6-10/100  
przepustowość nom - 6-10 l/s  
przepustowość max - 100 l/s  
poj. osadnika 1000 l